

# Flotation of kaolinite from tailings of kaolin-washing plants by cationic collectors

Kianoush Barani<sup>1a</sup>

<sup>1</sup>Department of Mining Engineering, Lorestan University, Khorramabad, Iran

**Abstract.** Traditional processing of kaolin is achieved by dispersion of the mined ore and classification by means of multistage hydrocyclones. The inefficiencies inherent to cyclones produce a middling product that is commonly disposed back to the quarry. In this research recovery of kaolinite from tailings of the Zonouzp kaolin washing plant, which is located in Iran, was investigated by cationic flotation. Flotation experiments showed that flotation of kaolinite from tailings was much better in an acidic than in an alkaline medium containing cationic collectors.

## 1 Introduction

In general, kaolin is upgraded by physical methods such as either water-washing or froth flotation. Kaolin particles are predominantly below 25  $\mu\text{m}$  and are flat shaped particles. Industrial separation is commonly achieved by dispersion of the mined ore and classification using multistage hydrocyclones. Kaolin reports to overflow, which is then reprocessed in other smaller cyclones. Due to inefficiencies associated with hydrocycloning, most plants are not able to produce clean kaolinite products and after either the 4<sup>th</sup> or 5<sup>th</sup> hydrocyclone stage the underflow cannot be further separated further. The underflow is either disposed as waste, sold cheaply to the cement industry and brick-manufacturing or used as back fill in the quarry [1-5].

The Zonouz mine, which is located in eastern Azerbaijan Province, has the only kaolin-washing plant in Iran. The plant has a considerable amount of tailings containing about 15%  $\text{Al}_2\text{O}_3$ . Mineralogically, the tailings consist of quartz, kaolin and iron oxide. The tailing has fine particles (100% finer than 100  $\mu\text{m}$  and about 30% finer than 20  $\mu\text{m}$ ), which can be easily dispersed by wind and settled down by rain and snow. Without either treatment or recycling, the tailing would cause environmental pollution. It is important to re-evaluate the tailings because of economic and environmental causes. Evaluation is economically feasible since it does not require additional mining costs. Kaolinite can be retrieved from the tailings by using flotation. However, flotation of kaolinite from the tailing is difficult because kaolinite and quartz, the two main minerals occurring in the tailings, have the same flotation behavior.

Both minerals are negatively charged in a wide range of pH, and therefore they can be floated by amine collectors in acidic and alkaline medium [6-8].

---

<sup>a</sup> Corresponding author: barani.k@lu.ac.ir

Many studies were carried out on kaolinite flotation (pure samples) by cationic collectors such as ether diamine, hydroxyl-alkyl-diethanolamine, cetylpyridinium chloride, cetyltrimethylammonium bromide and dodecylamine. The results of these studies showed that kaolinite flotation by cationic collectors was better under acidic conditions than in alkaline media [7-13]. Yuehua et al. (2004) tried to increase kaolinite recovery in alkaline medium by using a macromolecule as a flocculant. Without polyacrylamide, the kaolinite recovery decreased from 70 to 15%, with increasing the pH from 2 to 10. However, with polyacrylamide as a flocculant, kaolinite recovery increased under both acidic and alkaline conditions [11].

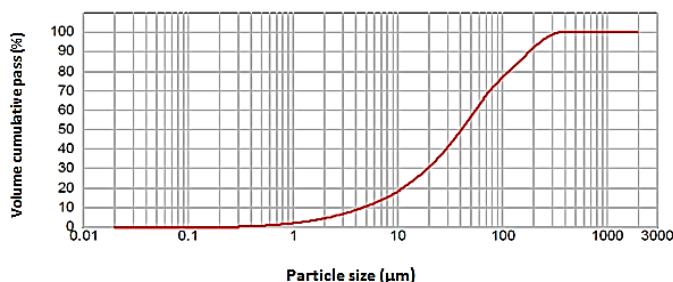
Comparison of flotation of kaolinite and quartz showed that two collectors (dodecylamine and EDA Flotigam) and two quaternary ammonium salts (cetylpyridinium chloride and cetyltrimethylammonium bromide) were the most effective collectors for floating both kaolinite and quartz. However, the time required for kaolinite flotation was 5-10 times longer than that for the quartz flotation, depending on the type of collector [10].

The purpose of the present study is to investigate the recovery of kaolinite from tailings of kaolin washing plants using flotation and flotation-flocculation.

## 2 Experimental

### 2.1 Materials

Samples used in this study were taken from the tailing dam of the Zonouz kaolin washing plant in East Azerbaijan Province, Iran. The size distribution of the representative sample was carried out by laser diffraction (Fig. 1). It is observed that the percent passing 100 and 50  $\mu\text{m}$  is respectively 100% and 50%, and more than 30% of the particles were smaller than 20  $\mu\text{m}$  (slime particles).



**Figure 1.** Particle size distribution of the tailing sample by laser diffraction.

According to the mineralogical analyses, it was found that the sample contained quartz, kaolinite and calcite as the main minerals, and muscovite, biotite, montmorillonite and iron-rich epidote as the minor minerals. The chemical composition of the sample is given in Table 1.

**Table 1.** Chemical composition of a sample.

Composition	SiO <sub>2</sub>	Al <sub>2</sub> O <sub>3</sub>	K <sub>2</sub> O	SO <sub>3</sub>	Fe <sub>2</sub> O <sub>3</sub>
%	74.67	15.35	0.25	0.11	0.33
Composition	CaO	SrO	P <sub>2</sub> O <sub>5</sub>	MgO	L.O.I
%	1.74	<0.01	<0.01	<0.01	7.54

## 2.2 Flotation experiments

Flotation experiments were carried out in a 1 dm<sup>3</sup> conventional laboratory cell (Denver model), at 25% solids ratio and agitation rate was 850 rpm. Pine oil was used as frother (150 g/ton), cetylpyridinium chloride (CPCI) and dodecylamine (DDA) as collectors, aluminum chloride as a depressant of quartz; sulfuric acid and sodium hydroxide as pH regulators. All reagents used in this study were of analytical grade.

The experiments were conducted in 5 parts. In each part, the effect of only one parameter was examined, while the other parameters were kept constant.

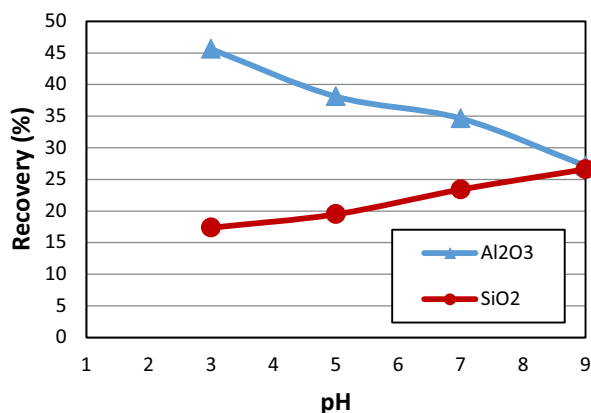
## 3 Results and discussion

### 3.1 Effect of pH with CPCI as collector

The first part of the experimental investigation was conducted to evaluate the effect of pH on the flotation results when CPCI was used as a collector. The results are illustrated in Fig 2. It can be seen, that with increasing pH from 3 to 9 the Al<sub>2</sub>O<sub>3</sub> recovery decreased and SiO<sub>2</sub> recovery increased. The assays of Al<sub>2</sub>O<sub>3</sub> and SiO<sub>2</sub> were respectively assumed as the kaolinite and quartz indicator recovery.

Figure 3 shows the structure of kaolinite crystal. At low pH (pH<4) the layer to layer interaction between the alumina face surface (00 $\bar{1}$ ) and silica face surface (001) was significant, as well as the interaction between the alumina face surface and edge surface (010). In this case, the cluster structures, and even more complex network structures, were formed by kaolinite particle aggregation. Figure 4 illustrates adsorption of cationic collector by the kaolinite cluster at low pH (pH<4), forming a hydrophobic structure [13].

In alkaline medium, the interaction between the cationic collector and plane (001), which contained oxygen, was stronger than that of the plane (00 $\bar{1}$ ), which contained Al. The plane (001) adsorbed hydrophobic collector, but the plane (00 $\bar{1}$ ) did not adsorb collector due to presence of Al and remained hydrophilic. As a results, collectors of the plane (001) were accumulated and formed structures which the outer surface was hydrophilic (Fig. 5) [9]. Therefore, as indicated in Fig. 2, kaolinite recovery decreased with increasing pH. A pH of 3 was chosen as the optimum condition and was used in for further experiments.



**Figure 2.** Flotation recovery of Al<sub>2</sub>O<sub>3</sub> and SiO<sub>2</sub> as a function of pH with CPCI as collector (CPCI=400 g/t, without depressant and de-slimming).

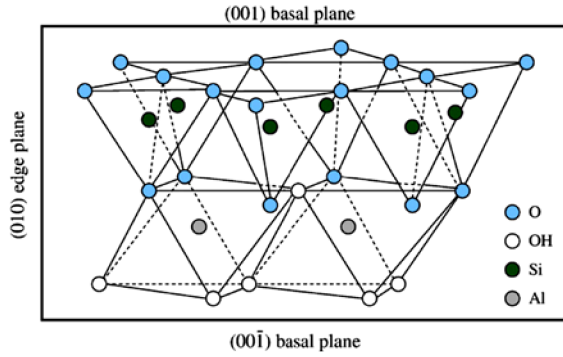


Figure 3. Structure of kaolinite [9].

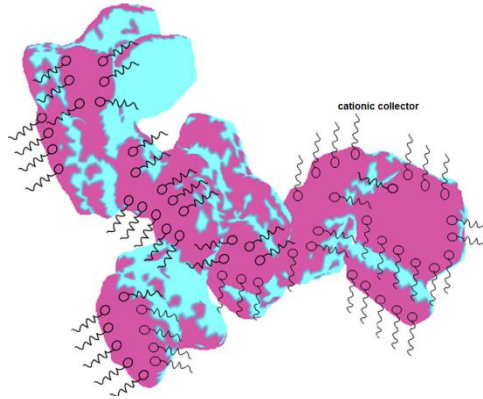


Figure 4. Kaolinite cluster adsorption of cationic collector at low pH. Pink surfaces represent the silica face surfaces of kaolinite particles and blue surfaces represent the alumina face surfaces of kaolinite particles [13].

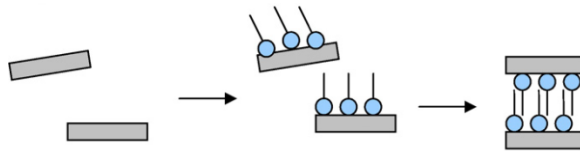
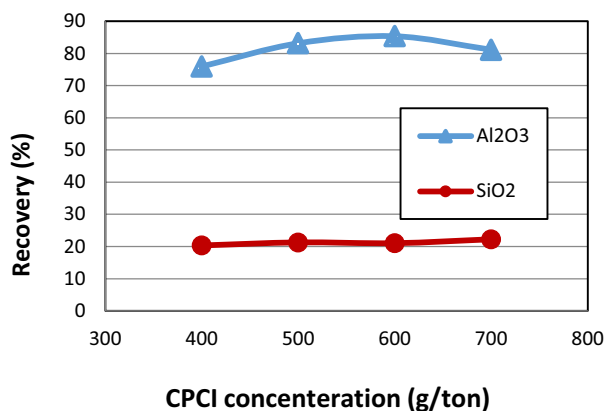


Figure 5. Schematic description of the kaolinite-amines interactions [9].

### 3.2 Effect of concentration of CPCI collector

The maximum recovery obtained for  $Al_2O_3$  in the first part of investigation (section 3.1) was around 45%, which was significantly low. For increasing the recovery of  $Al_2O_3$ , the effect of concentration of CPCI on the flotation results was investigated. Also the slime particles below 38  $\mu m$  were removed and aluminum chloride was presented used as the depressant.

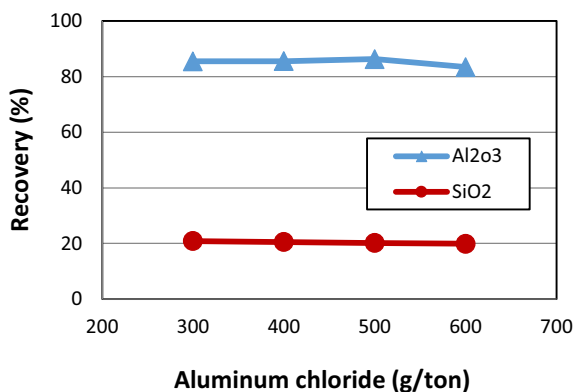
The results in Figure 6 indicate that the  $Al_2O_3$  recovery increased with increasing concentration of CPCI up to 600 g/t. The  $Al_2O_3$  recovery at a 600 g/t of CPCI exceeded 85%. A further increased of CPCI concentration to 700 g/t, cause that the  $Al_2O_3$  recovery was decreased to 81%. It was probably due to occurrence of the critical because the critical micelle concentration phenomenon was occurring. Although, more research and evidence are needed to prove it. Also, it was observed that the  $SiO_2$  recovery was constant and equal to 20%. It can be attributed to depression of quartz particles by aluminum chloride. The maximum separation efficiency (81%) was achieved at 600 g/t of CPCI.



**Figure 6.** Flotation recovery of Al<sub>2</sub>O<sub>3</sub> and SiO<sub>2</sub> as a function of CPCI concentration (pH 3, aluminum chloride depressant 300 g/t, desliming -38 μm).

### 3.3 Effect of aluminum chloride concentration with CPCI collector

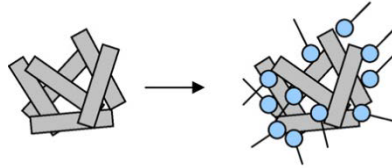
The results of part 2 (section 3.2) showed that the Al<sub>2</sub>O<sub>3</sub> recovery and separation efficiency were increased by using aluminum chloride as the quartz depressant. In this part, the effect and role of aluminum chloride was investigated. Figure 7 indicates that with increasing concentration of aluminum chloride from 300 to 600 g/t, the recoveries of Al<sub>2</sub>O<sub>3</sub> and SiO<sub>2</sub> did not significantly change. However, the best results were related to aluminum chloride value of 500 g/t, which produced the concentrate with recovery of 86.28% Al<sub>2</sub>O<sub>3</sub> and 20.19% SiO<sub>2</sub> and grade of 38.42% Al<sub>2</sub>O<sub>3</sub> and 52.96% SiO<sub>2</sub>.



**Figure 7.** Flotation recovery of Al<sub>2</sub>O<sub>3</sub> and SiO<sub>2</sub> as a function of aluminum chloride concentration (pH 3, CPCI 600 g/t, desliming -38μm).

Ions of aluminum chloride (Al<sup>3+</sup>) play two positive roles during flotation. From one side they act as the depressant of quartz. In fact, these ions deposit on the surface of quartz, which has negative charge and competes with the collector ions that prevent quartz floatation. However, the excessive increased level of Al<sup>3+</sup> increases the kaolin zeta potential. On the other side, these ions increase the ionic strength of the pulp. In a high ionic strength environment, although the negative charge on the

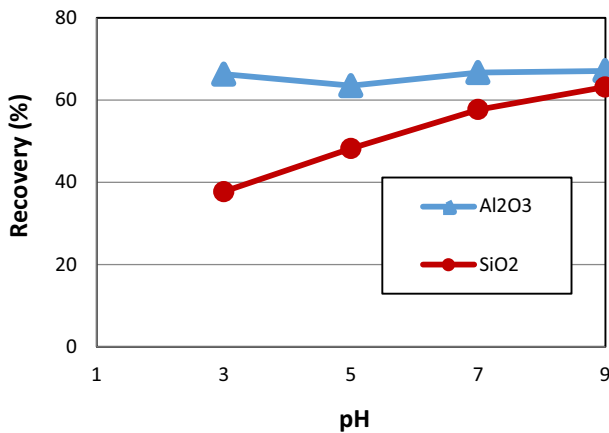
basal the planes (00 $\bar{1}$ ) and (001) is constant, the zeta potential caused by the surface charge on both basal planes and edges is significantly screened and thus aggregation of kaolinite particles can occur (Fig. 8). The surface charge at high ionic strength also weakens self-aggregation between the negatively charged (00 $\bar{1}$ ) planes and positively charged edge planes in the acidic pulp. Thus, the pH dependence of kaolinite flotation becomes less pronounced [9].



**Figure 8.** Aggregation of kaolinite particles in a high ionic strength environment [8].

### 3.4 Effect of pH on with DDA collector

Previous studies showed, dodecylamine (DDA) was the effective collector for flotation of both kaolinite and quartz [10]. In this part, flotation of kaolinite by DDA in the presence of aluminum chloride as quartz depressant was evaluated. Fig. 9 shows that during kaolinite flotation with DDA collector, with increasing pH, both recoveries of Al<sub>2</sub>O<sub>3</sub> and SiO<sub>2</sub> increased. The maximum recovery of Al<sub>2</sub>O<sub>3</sub> and SiO<sub>2</sub> was obtained at pH=9. It seems that, there are differences between the DDA and CPCI results. As it can be seen in Fig. 2, by using CPCI, with increasing pH, the Al<sub>2</sub>O<sub>3</sub> recovery decreased. The effect of pH on selectivity separation is clearly shown in Figure 9. At pH=3 the difference between Al<sub>2</sub>O<sub>3</sub> and SiO<sub>2</sub> recoveries was around 28% and a good selectivity was achieved. With increasing pH this difference was reduced and recoveries of Al<sub>2</sub>O<sub>3</sub> and SiO<sub>2</sub> were almost equal at pH=9. The best results were obtain at pH=3, where a concentrate with recovery of 66.25% Al<sub>2</sub>O<sub>3</sub> and 37.74% SiO<sub>2</sub>, respectively, and assays of 20.84% Al<sub>2</sub>O<sub>3</sub> and 69.93%SiO<sub>2</sub>.

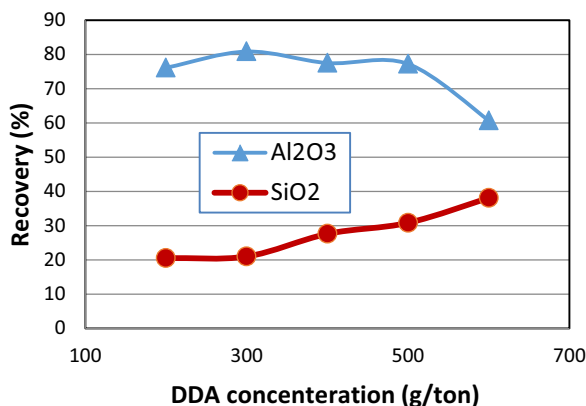


**Figure 9.** Flotation recovery of Al<sub>2</sub>O<sub>3</sub> and SiO<sub>2</sub> as a function of pH with DDA as a collector (DDA 600 g/t, aluminum chloride 300 g/t, desliming -38 μm).

### 3.5 Effect of concentration of DDA collector

The results of part 4 (section 3.4) showed that satisfactory separation of kaolinite and quartz by the DDA collector in the presence of aluminum chloride can be obtained in acidic pHs, but high dosage of the collector is required. In this part the effect of DDA concentration is studied.

Figure 10 indicates that the maximum recovery of  $\text{Al}_2\text{O}_3$  at a concentration of 300 g/t was equal to 80% but increasing DDA concentration decreased grade of  $\text{Al}_2\text{O}_3$ . Also,  $\text{SiO}_2$  recovery increased from 20 to 38% by increasing the DDA concentration. The best flotation results in term of grade and recovery of  $\text{Al}_2\text{O}_3$  were achieved for collector concentration of 300 g/t. This condition, the concentrate with a grade of 36%  $\text{Al}_2\text{O}_3$  and 52%  $\text{SiO}_2$  and recovery of 80%  $\text{Al}_2\text{O}_3$  and 21%  $\text{SiO}_2$ .



**Figure 10.** Flotation recovery of  $\text{Al}_2\text{O}_3$  and  $\text{SiO}_2$  as a function of DDA concentration (pH 3, aluminum chloride 300 g/t, desliming -20  $\mu\text{m}$ )

## 4 Conclusions

This paper showed that for both CPCI and DDA collectors, the best results were obtained at acidic pH. It was shown that the best selectivity was obtained by using CPCI. Aluminum chloride had considerable effect on the flotation performance, which was an effective depressant for quartz. Flotation under acidic condition of pH 3 caused problems such as equipment erosion at industrial scale.

## Acknowledgement

The authors of this article would like to thank managers and engineers at Zonouz kaolin-washing plant for providing us with the samples, Lorestan University for providing the required equipment and chemical materials for the experiments and Iranian Mineral Processing Research Center (IMPRC) for performing chemical analysis.

## References

1. H. H. Murray, *Applied clay mineralogy: occurrences, processing and applications of kaolins, bentonites, palygorskites, sepiolite, and common clays*, vol. 2. (Elsevier, 2006)
2. M. Valaskova and G. S. Martynková, *InTech* (2012)
3. H. H. Murray, *Int. J. Miner. Process.*, **7**(3), 263 (1980)

4. R. J. Pruett, *Min. Eng.*, **52**(10), 21 (2000)
5. J. E. Kogel, *SME* (2002)
6. M. C. Fuerstenau, J. D. Miller, and M. C. Kuhn, *Inc., New York*, 132 (1985)
7. R. Koster, B. Schreck, W. von Rybinski, B. Dobiás, R. Kaster, B. Schreck, W. von Rybinski, and B. Dobias, *Miner. Eng.*, **5**(3), 445 (1992)
8. H. Jiang, Z. Sun, L. Xu, Y. Hu, K. Huang, and S. Zhu, *Miner. Eng.*, **65**, 124 (2014)
9. X. Ma, W. J. Bruckard, and R. Holmes, *Int. J. Miner. Process.*, **93**(1), 58 (2009)
10. O. M. S. Rodrigues, A. E. C. Peres, A. H. Martins, and C. A. Pereira, *Miner. Eng.*, **40**, 12 (2013)
11. H. Yuehua, S. Wei, L. Haipu, and Z. Xu, *Miner. Eng.*, **17**( 9–10), 1017 (2004)
12. C. Liu, Y. Hu, and X. Cao, *Miner. Eng.*, **22**( 9–10), 849 (2009)
13. J. Liu, X. Wang, C. L. Lin, and J. D. Miller, *Miner. Eng.*, **78**, 58 (2015)