

The analysis of the possibility of using 10-minute rainfall series to determine the maximum rainfall amount with 5 minutes duration

Bartosz Kaźmierczak^{1,*}, *Katarzyna Wartalska*¹, *Marcin Wdowikowski*², and *Andrzej Kotowski*¹

¹Wrocław University of Science and Technology, Faculty of Environmental Engineering, Plac Grunwaldzki 13, 50-377 Wrocław, Poland

²Institute of Meteorology and Water Management – National Research Institute, Podleśna Street 61, 01-673 Warsaw, Poland

Abstract. Modern scientific research in the area of heavy rainfall analysis regarding to the sewerage design indicates the need to develop and use probabilistic rain models. One of the issues that remains to be resolved is the length of the shortest amount of rain to be analyzed. It is commonly believed that the best time is 5 minutes, while the least rain duration measured by the national services is often 10 or even 15 minutes. Main aim of this paper is to present the difference between probabilistic rainfall models results given from rainfall time series including and excluding 5 minutes rainfall duration. Analysis were made for long-time period from 1961–2010 on polish meteorological station Legnica. To develop best fitted to measurement rainfall data probabilistic model 4 probabilistic distributions were used. Results clearly indicates that models including 5 minutes rainfall duration remains more appropriate to use.

1 Introduction

In both newly designed and existing sewage systems, according to the European standard PN-EN 752:2008, it is recommended to verify the design assumptions by using hydrodynamic simulations. Designers insufficient access to rainfall databases is the main barrier to model safe drainage systems in Poland. The most commonly required at the entrance to hydrodynamic models are storm and heavy rainfall hyetographs with 5 minutes time resolution. The maximum precipitation models (in the form of IDF or DDF curves) are the grounds for the creation of a model precipitation to use in hydrodynamic models [1–8].

In Poland, an access to the precipitation source data is a matter for the Institute of Meteorology and Water Management (IMWM), the owner of the largest number of meteorological stations in the country. The extremely valuable research material on precipitation, due to the number of the stations and the length of the measurement series (often decades), are paper pluviographic strips, on which precipitation were recorded by 2010. It is possible to read information about rainfall height from the paper strips even with

* Corresponding author: bartosz.kazmierczak@pwr.edu.pl

a resolution time of 5 minutes. Many maximum precipitation models have been developed and applied in engineering practice on the basis of this records [9–12].

Since 2007, the IMWM has been recording precipitation by digital rain gauges. Time series are currently recorded with a 10-minute time resolution, which is a matter of concern because in designing and modeling of sewage systems it is needed information about shorter precipitation, lasting 5 minutes [1].

In the paper [13], an attempt has been made to develop two maximum precipitation models for Legnica, with the use of generalized exponential distribution (GED) – considered to be the best probability distribution for analyzed meteorological station [11]. The first model based on rainfall data with durations ranging from 5 minutes to 6 days, while the second model was developed on the basis of rainfall data of durations from 10 minutes to 6 days and the amounts of precipitation with the duration of 5 minutes were extrapolated. The comparison, using relative residual mean square error (RRMSE), between predicted precipitation amounts and measurement data revealed that the first precipitation model accurately maps the measurement results. For rainfall with a duration of 5 minutes, the differences between the predicted and measured precipitation amounts at the level of $RRMSE = 2.9\%$ were noticed. The results of using the second model to determine precipitation heights with a 5 minute duration (parameters extrapolation) were not correlated with the measurement results ($RRMSE = 41.5\%$) and therefore, the GED distribution is inappropriate for estimating precipitation amounts for the duration of $t = 5$ min and it is requested to increase the temporal resolution of recorded rainfall for 5-minute or shorter intervals.

In this paper, the utility of the other, applied in practice, probability distributions was examined, i.e. Fréchet, gamma, log-normal and Weibull distributions [11], in order to analyze the possibility of using 10-minute rainfall series to determine the maximum rainfall amount with 5 minutes duration. The analysis was carried out using archival pluviographs from Legnica from the time span 1961–2010. Distribution parameters were calculated (for rainfall duration from 10 to 8640 minutes) and the model describing the dependence of the amount of rainfall on its duration and specified exceedance probability was subsequently established. Then, precipitation amounts for the 5 minutes duration were computed. The obtained results were compared with the measurement data.

2 Materials and methods

The meteorological station of IMWM in Legnica is a part of national measurement and observation network at hydrological and meteorological service. This synoptic station is located on the south-eastern outskirts of the city, at an elevation of 122 m above the sea level. Fields and wasteland are the main land use in both municipality and rural areas around the station [11]. In this study, the archival pluviographs from this IMWM meteorological station from the time span 1961–2010 were used as a research material.

A selection of data has been done in order to determine the relationship between the amount of rainfall from its duration and probability of exceedance $h(t,p)$. Elaborating archival pluviographs authors limited period of analysis to months from May to October (V–X) [9–11].

From the tested 50-years period top 50 maximum amounts (h , mm) of rainfall were set apart for each of the following rainfall durations: $t = 5, 10, 20, 30, 40, 50, 60, 90, 120, 180, 360, 720, 1080, 1440, 2160, 2880, 4320, 5760, 7200$ and 8640 minutes. The isolation has been done on the basis of the Peak-Over-Threshold (POT) method [14–19]. Selected top rainfall heights were listed in descending order. In compliance with following formula:

$$p(m, N) = \frac{m}{N+1} \quad (1)$$

where m is the sequence number within a decreasing ordered string of the number of N , for each rainfall amount there were assigned the empirical probability of exceedance from $p = 0.020$ (for the highest value) to $p = 0.980$ (for the lowest value) [9, 10]. The rainfall heights recorded and selected values of empirical probability assigned to them are shown in Table 1.

Table 1. The amount of rainfall (h , mm) recorded for selected values of empirical probability ($m = 1, 5, 10, 25$ and 50).

t , min	p				
	0.020	0.098	0.196	0.490	0.980
5	16.2	11.2	9.8	7.6	4.6
10	23.5	17.5	14.1	10.9	8.3
20	31.7	25.1	20.1	14.5	11.3
30	32.0	26.9	24.5	16.0	12.5
40	37.4	28.2	25.2	17.6	13.0
50	39.8	31.0	25.2	18.2	13.7
60	40.6	31.6	25.9	19.9	14.2
90	41.0	36.2	29.4	21.6	16.5
120	49.6	39.6	32.2	22.8	18.2
180	57.6	40.7	34.5	26.3	20.0

t , min	p				
	0.020	0.098	0.196	0.490	0.980
360	57.7	47.2	40.9	30.6	23.9
720	74.9	51.8	44.6	35.8	28.6
1080	77.3	57.7	51.6	41.3	32.4
1440	77.3	66.3	57.7	46.4	35.7
2160	114.8	77.3	61.1	49.4	38.7
2880	129.3	97.8	74.3	53.0	41.3
4320	143.1	97.8	77.6	57.4	41.3
5760	157.0	116.0	83.9	61.9	47.1
7200	158.5	121.1	86.0	69.9	51.7
8640	167.9	132.3	91.9	71.4	53.7

For the description of survey data, the following probability distributions have been used: Fréchet, gamma, log-normal and Weibull distribution. The logarithms of their likelihood functions appear as follows:

$$\ln L = \alpha^n \beta^{n\alpha} \prod_{i=1}^n (x_i - \gamma)^{-(\alpha+1)} \exp \left[-\sum_{i=1}^n \left(\frac{\beta}{x_i - \gamma} \right)^\alpha \right] \tag{2}$$

$$\ln L = (\alpha - 1) \sum_{i=1}^n \ln(x_i - \gamma) - n \ln \Gamma(\alpha) - n \alpha \ln \beta - \frac{1}{\beta} \sum_{i=1}^n (x_i - \gamma) \tag{3}$$

$$\ln L = -\sum_{i=1}^n \ln(x_i - \gamma) - n \ln \alpha - \frac{n}{2} \ln(2\pi) - \frac{1}{2\alpha^2} \sum_{i=1}^n (\ln(x_i - \gamma) - \beta)^2 \tag{4}$$

$$\ln L = n \ln \alpha - n \alpha \ln \beta + (\alpha - 1) \sum_{i=1}^n \ln(x_i - \gamma) - \sum_{i=1}^n \left(\frac{x_i - \gamma}{\beta} \right)^\alpha \tag{5}$$

where α, β and γ are parameters of distributions.

Quantiles of the random variable analyzed distributions takes the form of the following formulas:

$$h_p = \gamma + \beta (-\ln(1 - p))^{-\frac{1}{\alpha}} \tag{6}$$

$$h_p = \gamma + \beta t_p \tag{7}$$

$$h_p = \gamma + e^{\alpha + \beta t_p} \tag{8}$$

$$h_p = \gamma + \beta (-\ln p)^{\frac{1}{\alpha}} \tag{9}$$

The Anderson-Darling test for statistics [20, 21] was used for establishing the coincidence of theoretical distributions with measured data:

$$A^2 = -n - \frac{1}{n} \sum_{i=1}^n (2i - 1) [\ln F(X_i) + \ln(1 - F(X_{n-i+1}))] \tag{10}$$

where: $x_i - i$ -th value in the decreasing ordered random sample, $F(x) -$ cumulative distribution function for the theoretical distribution. The null hypothesis H_0 (when measurement data were adequate for tested theoretical distribution), was set at a significance level of 0.05 if the A^2 was less than the critical value A_{kr}^2 . The alternative hypothesis was taken otherwise. For Fréchet, gamma, log-normal and Weibull distribution

and for $N = 50$ the critical value amounts to respectively: $A_{kr}^2 = 0.757$, $A_{kr}^2 = 0.762$, $A_{kr}^2 = 0.752$ and $A_{kr}^2 = 0.757$.

For the evaluation of the aptitude of investigated distributions and for describing the survey data, relative residual mean square error (11) was used:

$$RRMSE = \sqrt{\frac{1}{n} \sum_{i=1}^n \left(\frac{h_{o,i} - h_{p,i}}{h_{p,i}} \right)^2} \cdot 100\% \tag{11}$$

where: h_t – the theoretical amount of rainfall (mm), h_m – amount of rainfall from measurements (mm).

3 Results

Calculation results of particular parameters of distributions were presented in Tables 2–5. The parameter estimates were determined by numerical maximization of the log-likelihood functions (2)–(5). The calculations were carried out for each of 20 durations of maximum precipitation amounts analyzed in the paper. All distributions fulfils the compliance criterion A^2 for each of the 20 analyzed rainfall durations (except log-normal distribution for the duration $t = 7200$ min).

Table 2. Calculation results of parameters of Fréchet distribution.

$t, \text{ min}$	α	β	γ	A^2	$RRMSE$
5	9.011	15.797	-8.90	0.152	3.0
10	2.269	3.863	6.05	0.379	3.7
20	1.551	3.424	9.73	0.582	11.3
30	1.640	4.090	10.63	0.514	12.1
40	2.007	6.010	9.84	0.403	7.2
50	2.444	7.951	9.01	0.383	4.5
60	3.675	13.577	4.59	0.261	3.1
90	2.385	8.407	11.66	0.325	6.1
120	1.795	5.881	15.58	0.467	7.0
180	1.977	7.770	15.90	0.489	5.4

$t, \text{ min}$	α	β	γ	A^2	$RRMSE$
360	2.297	10.502	17.86	0.436	6.4
720	2.987	15.784	18.24	0.292	2.3
1080	2.744	15.314	22.71	0.386	3.3
1440	4.479	31.384	11.68	0.323	3.0
2160	2.747	20.546	25.93	0.359	3.0
2880	1.652	14.144	35.06	0.305	7.1
4320	2.266	22.305	29.40	0.232	3.3
5760	1.474	15.110	41.59	0.581	10.2
7200	1.709	18.962	41.96	0.609	7.5
8640	1.829	21.802	42.79	0.399	6.3

Table 3. Calculation results of parameters of gamma distribution.

$t, \text{ min}$	α	β	γ	A^2	$RRMSE$
5	2.113	1.776	4.37	0.176	3.0
10	0.868	4.065	8.29	0.262	2.6
20	0.684	7.210	11.29	0.500	3.3
30	0.803	6.934	12.49	0.320	4.2
40	0.917	6.954	12.99	0.138	2.5
50	0.997	6.735	13.69	0.194	2.3
60	1.103	6.576	14.18	0.275	2.5
90	0.922	8.001	16.49	0.414	3.3
120	0.955	7.894	18.19	0.404	2.9
180	0.885	9.458	19.99	0.177	2.4

$t, \text{ min}$	α	β	γ	A^2	$RRMSE$
360	0.927	10.167	23.89	0.289	3.2
720	0.945	11.190	28.59	0.408	2.2
1080	0.969	11.555	32.39	0.249	2.2
1440	0.938	13.962	35.69	0.699	3.4
2160	0.932	16.676	38.59	0.474	3.2
2880	0.831	23.882	41.29	0.163	3.3
4320	0.975	22.401	41.29	0.423	3.6
5760	0.866	28.871	47.09	0.366	3.9
7200	0.666	35.982	51.69	0.410	3.8
8640	0.802	32.908	53.69	0.266	4.3

Table 4. Calculation results of parameters of log-normal distribution.

t, min	α	β	γ	A^2	$RRMSE$
5	0.508	1.458	3.24	0.156	2.9
10	0.953	0.951	7.94	0.344	3.1
20	1.147	1.113	11.00	0.492	7.2
30	1.092	1.272	12.17	0.421	8.0
40	0.978	1.514	12.47	0.295	5.1
50	0.914	1.624	13.05	0.359	3.7
60	0.741	1.900	12.79	0.261	2.7
90	0.873	1.762	15.63	0.262	4.6
120	0.962	1.667	17.66	0.369	4.0
180	1.026	1.739	19.42	0.421	4.2

t, min	α	β	γ	A^2	$RRMSE$
360	0.917	1.974	22.89	0.370	5.1
720	0.800	2.214	26.83	0.262	2.1
1080	0.859	2.205	30.94	0.340	2.9
1440	0.694	2.579	32.30	0.303	2.8
2160	0.817	2.565	36.37	0.377	2.9
2880	1.075	2.530	40.26	0.198	4.0
4320	0.870	2.819	39.09	0.207	3.0
5760	1.085	2.737	46.13	0.392	4.7
7200	1.229	2.625	50.53	0.776	7.4
8640	1.076	2.828	52.13	0.375	4.8

Table 5. Calculation results of parameters of Weibull distribution.

t, min	α	β	γ	A^2	$RRMSE$
5	1.442	3.963	4.52	0.204	3.3
10	0.937	3.431	8.29	0.261	2.6
20	0.806	4.455	11.29	0.596	3.7
30	0.890	5.286	12.49	0.339	4.4
40	0.969	6.291	12.99	0.142	2.6
50	1.019	6.765	13.69	0.186	2.4
60	1.101	7.506	14.18	0.220	2.4
90	0.986	7.336	16.49	0.369	3.2
120	0.980	7.477	18.19	0.403	3.0
180	0.943	8.168	19.99	0.185	2.5

t, min	α	β	γ	A^2	$RRMSE$
360	0.986	9.374	23.89	0.281	3.2
720	1.002	10.578	28.59	0.350	2.2
1080	1.014	11.258	32.39	0.217	2.1
1440	1.028	13.216	35.69	0.565	2.6
2160	0.983	15.436	38.59	0.479	3.2
2880	0.896	18.855	41.29	0.150	3.1
4320	0.996	21.810	41.29	0.405	3.7
5760	0.916	24.003	47.09	0.351	3.8
7200	0.787	21.279	51.69	0.527	3.9
8640	0.881	24.885	53.69	0.261	4.2

Following the equations (6)–(9) and the parameters listed in Tables 2–5, the precipitation amount with any exceedance probability and selected rainfall duration ranging from 5 to 8640 minutes can be calculated. In this respect, it should be noted that the current 10-minute time step of rainfall registration will not allow in the future to estimate parameters for precipitation with the duration of 5 minutes. So these parameters will have to be extrapolated.

The parameters β and γ have a clearly marked trend. Since there is no dependency trend $\alpha(t)$, the mean value of $\bar{\alpha} = 2.312$, $\bar{\alpha} = 0.894$, $\bar{\alpha} = 0.953$ and $\bar{\alpha} = 0.954$ was assumed in the calculations (respectively for Fréchet, gamma, log-normal and Weibull distribution).

Based on the calculated distribution parameters there were prepared plots (Fig. 1) showing their dependence on the rainfall duration (from 10 to 8640 minutes).

Finally, a models describing the dependence of the amount of rainfall on its duration and a specified exceedance probability, based on the quantiles (6)–(9), takes the form of:

$$h_p = 2.763t^{0.300} + 3.578t^{0.204}(-\ln(1 - p))^{-0.433} \tag{12}$$

$$h_p = 5.253t^{0.256} + 1.304t^{0.355}t_p(\alpha, p) \tag{13}$$

$$h_p = 4.843t^{0.261} + e^{0.927t^{0.127} + 0.953t_p(p)} \tag{14}$$

$$h_p = 5.253t^{0.256} + 1.879t^{0.283}(-\ln p)^{1.049} \tag{15}$$

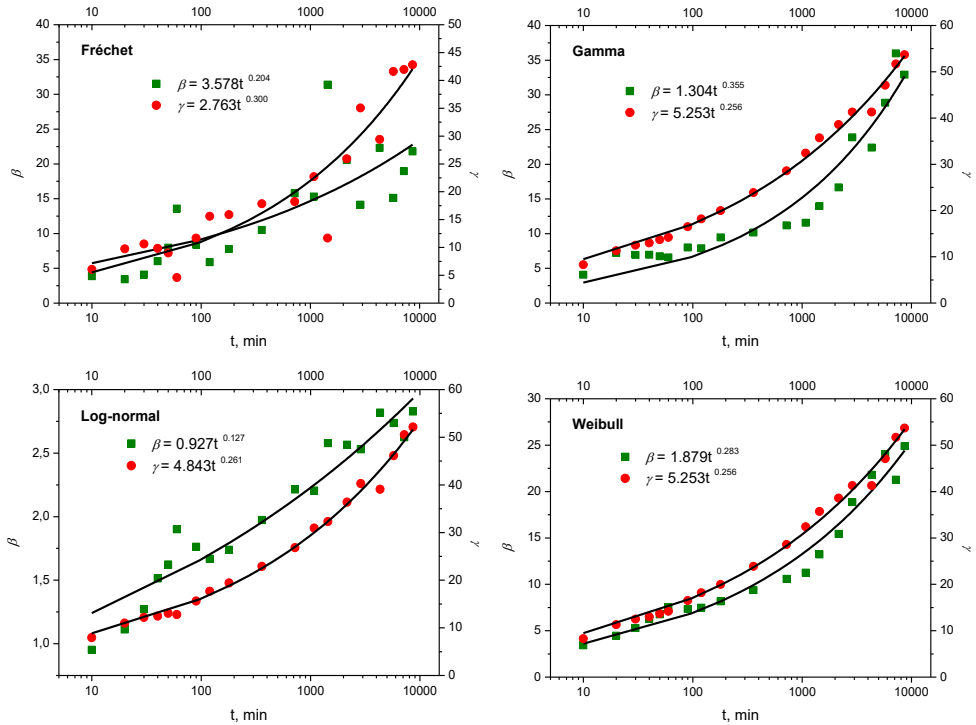


Fig. 1. The dependence of the parameters β and γ of the rainfall duration.

Based on the obtained formula (12)–(15), precipitation amounts for the 5 min duration were computed. The received results were compared with the measurement data and the precipitation amount calculated using formula (6)–(9) with the parameters from Tables (2)–(5). The fit quality of the equations for rainfall data from Legnica is shown in the h - h plot (Fig. 2).

Analysis of Figure 2 shows that precipitation amounts calculated from equations (12)–(15) differ significantly from measurement results and from the results obtained from the models (6)–(9) – already similar to measured rainfall data.

There were also calculated relative residual mean square error statistics, covering the entire range of data ($t = 5$ min). In this case $R_{RMSE} = 3.0\%$, 3.0% , 2.9% and 3.3% for h calculated by (6)–(9) and $R_{RMSE} = 44.3\%$, 30.9% , 47.3% and 37.6% for h calculated by (12)–(15). Deviations from the measurements at the level of several dozen percents disqualify analyzed method of determining precipitation amounts with the duration of 5 minutes.

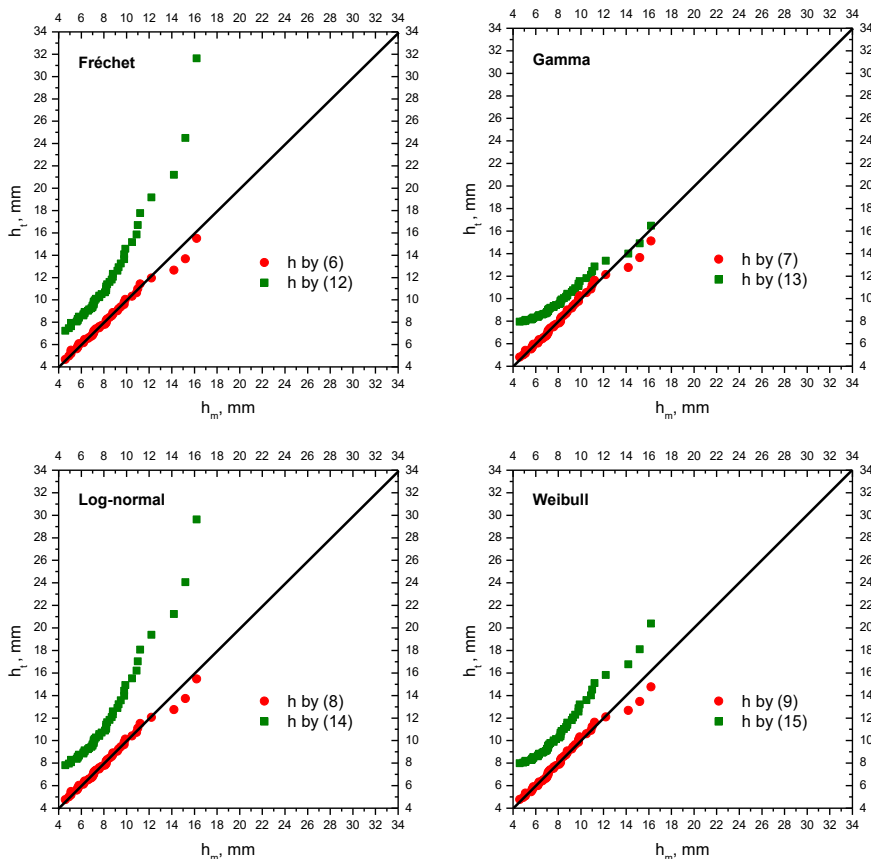


Fig. 2. The h - h plots for the distributions.

4 Conclusions

In this paper archival pluviographic records from long term period 1961–2010 were used to develop two types of probabilistic maximum precipitation models. The area of this research was Polish meteorological station in Legnica in Lower Silesia voivodeship. The first group of models were developed on the basis of rainfall data durations from 10 minutes to 6 days. 5 minutes duration precipitation amounts were extrapolated. Models were constructed on four probabilistic distributions: Fréchet, gamma, log-normal and Weibull. In the second solution only 5 minutes rainfall duration values were computed using all four probability distribution quantiles. Both models were compared with measurement rainfall data using relative residual mean square error. The conducted analysis allowed to draw the following conclusions:

- The maximum precipitation model (6)–(9) with the parameters shown in Table from 2 to 5 thoroughly describes the measurement rainfall data for 5 minutes duration in Table 1. The R_{RMSE} indicator varies from 2.9% for log-normal to 3.3% for Weibull distribution.
- In the case of using models from (12) to (15) to determine precipitation heights with a duration of $t = 5$ min (parameters extrapolation) obtained results were not correlated with the measurement results - R_{RMSE} from 30.9% to 47.3%. Precipitation amounts with a duration of $t = 5$ min can be estimated with some approximation based on the

precipitation heights data for the duration of $t = 10$ min. The analysis of measurement data indicates that during the period considered, the maximum precipitation with a duration of $t = 5$ min represented on average 68% of maximum rainfall heights with a duration of $t = 10$ min. However, this estimation should be treated only indicatively, since this variability ranged in the case of the largest 50 precipitations from 55% to 75%. In order to draw up reliable conclusions, further research in this field involving other measurement stations is needed.

- In the light of the obtained results, it is requested to increase the temporal resolution of recorded by IMWM rainfall for 5-minute or shorter intervals.

Including all above described method should be regarded as inappropriate for estimating precipitation amounts for the duration of $t = 5$ min. Good quality rainfall model should be based on the 5 minutes rainfall durations that had been measured not extrapolated.

The work was realized within the allocation No. 0401/0006/17 awarded for Faculty of Environmental Engineering Wrocław University of Science and Technology by Ministry of Science and Higher Education in years 2017–2018.

References

1. A. Kotowski, *The principles of safe dimensioning of sewer systems* (Seidel-Przywecki, Warsaw, 2015)
2. E. Burszta-Adamiak, M. Mrowiec, *Water Sci Technol* **68**, 1 (2013)
3. A. Kotowski, K. Wartalska, M. Nowakowska, *Ochrona Środowiska* **38**, 1 (2016)
4. B. Kowalska, D. Kowalski, G. Łagód, M. Widomski, *Modelling of Hydraulics and Pollutants Transport in Sewer Systems with Exemplary Calculations in SWMM* (Lublin University of Technology, Lublin, 2013)
5. S. Y. Park, K. W. Lee, I. H. Park, S. R. Ha, *Desalination* **226**, 1–3 (2008)
6. T. G. Schmitt, *Kommentar zum Arbeitsblatt A 118 Hydraulische Bemessung und Nachweis von Entwässerungssystemen* (DWA, Hennef, 2000)
7. T. G. Schmitt, M. Thomas, *KA – Wasserwirtschaft, Abwasser, Abfall* **47**, 1 (2000)
8. D. Słyś, A. Stec, *Environment Protection Engineering* **38**, 4 (2012)
9. A. Kotowski, B. Kaźmierczak, A. Dancewicz, *The modeling of precipitations for the dimensioning of sewer systems* (Polish Academy of Sciences, Warsaw, 2010)
10. E. Bogdanowicz, J. Stachý, *Maximum rainfall in Poland. Design characteristics* (The Publishing House of the Institute of Meteorology and Water Management, Warsaw, 1998)
11. B. Kaźmierczak, M. Wdowikowski, *Periodica Polytechnica Civil Engineering* **60**, 2 (2016)
12. R. Suligowski, *Maximum credible precipitation at the Kielce Upland* (The Jan Kochanowski University, Kielce, 2013)
13. B. Kaźmierczak, K. Wartalska, M. Wdowikowski, *E3S Web of Conferences* **17**, 00038 (2017)
14. W. Jakubowski, *Meteorology Hydrology and Water Management* **3**, 2 (2015)
15. A. Mailhota, S. Lachance-Cloutierb, G. Talbota, A.C. Favrec, *J Hydrol* **476**, 7 (2013)
16. C. Onyutha, *Journal of Urban and Environmental Engineering* **6**, 2 (2012)
17. W. L. Shinyie, N. Ismail, A. A. Jemain, *Water Resour Manag* **28**, 11 (2014)
18. S. Wi, B. J. Valdés, S. Steinschneider, T. W. Kim, *Stoch Env Res Risk A* **30**, 2 (2016)

19. A. G. Yilmaz, I. Hossain, B. J. C. Perera, *Hydrol Earth Syst Sc* **18** (2014)
20. R. D'Agostino, M. A. Stephens, *Goodness of Fit Techniques* (Marcel Dekker, New York, 1986)
21. S. Hongjoon, J. Younghun, J. Changsam, H. Jun-Haeng, *Stoch Env Res Risk A* **26**, 1 (2012)