

Product obsolescence of cellular phone market in Indonesia: a consumer perspective

Rafika Maulia^{1*} and Alin Halimatussadiyah¹

¹Department of Economics, Faculty of Economics and Business, Universitas Indonesia, Indonesia

Abstract. Obsolescence leads to a shorter lifecycle of electronic products which results in generating more electronic waste (e-waste) and excessive use of natural resources to produce goods. It is basically a wearing out of technical or esthetical appliances. Unfortunately, there are only a few studies and data focused on the issue, especially in developing countries. The objective of this study is to show how the lifespan of cellular phone change overtime and to provide data about consumer behavior in the Indonesia's cellular phone market. A total of 1.030 respondents were recruited from online survey in 13 most populous cities of Indonesia for consumer analysis. Panel regression Common Effect Model (CEM) and Chi-squared independent test were applied as the analytical tools. The result shows that both consumer contribute to the reduction of cellular phone lifecycle. It is confirmed that the lifespan of cellular phone is getting shorter by the year and by the ownership order. In addition, subjective considerations of discarding product significantly reduce cellular phone's lifespan. Obsolescence is not only an issue that should be addressed to the manufacturers, but also as a responsibility for the consumers.

1 Introduction

E-waste is a set of electronic and electrical equipment (EEE) alongside with their components that has been disposed by the owner without any desire for further reutilization. E-waste is increasing among developing countries following people's income amelioration as an implication of the considerate economic growth rapidity [1]. United Nation University ViE – SCYCLE found that within 2010 to 2015, the growth of e-waste in developing countries reached 65%. In East and South-east Asia, the rise of e-waste amounted to 62.7%. Meanwhile, Indonesia ranks first as the highest e-waste generator in South-east Asia with 68% growth [2]. This fact possesses a big problem in sustainability aspect, especially in consumption, production, and resource utilization.

The increase in e-waste volume, among others, is one of the consequences of a product obsolescence phenomenon. Product obsolescence leads to a shorter lifecycle of various electronic products. Product obsolescence occurs in parallel to changes in society's consumption pattern and the producers' strategy to improve the scale of their companies, which accordingly shorten the lifespan of products [3,4,5]. Furthermore, factors that propel

* Corresponding author: rafikamaulaa@gmail.com

the shortening of products' lifespan include the speed of trends and taste shift among societies and rapid technological enhancement [6].

In general, Packard (1960) classifies product obsolescence into three types, quality obsolescence (material) which refers to low material qualities used; functional obsolescence, the implication of technological improvement that enhance products' functions diversity and resources efficiency; and desirability-driven obsolescence or psychological obsolescence, occurs because of consumers' subjective assessment [5, 6, 7]. In his subsequent studies, Cooper (2004) widens the classification by adding a new obsolescence type, which is the economic obsolescence as a form of products' performance comparison or the price ratio with their alternative products. Apart from the four types of product obsolescence as mentioned above, Granberg (1997) also divides product obsolescence into two types; "absolute obsolescence" where products are in absolute damage and no longer usable and "relative obsolescence" where products are already disposed despite of their remaining usage capacity [8].

Cooper (2004) conducted a research on consumer behavior regarding product obsolescence on a myriad of electronic equipment and found that a product lifespan is largely influenced by relative obsolescence compared to absolute obsolescence. The study also found that cellular phones and computer equipment are the highest among other electronic products to be influenced by functional/technological obsolescence. A research done by Wang et al. (2013) in the Netherlands reveals a decline in the average lifespan of EEE from 2000 to 2005 [9]. Moreover, Li (2005) found that there was a significant increase in cellular phone disposal volume in China in a decade since 2002 [10].

Although the product obsolescence phenomenon is incrementally visible, the data provided in support for this issue are highly limited, especially in developing countries such as Indonesia. For this reason, this study aims to discover how products' lifespan alters overtime and to provide data on consumer behavior in Indonesia's cellular phone market.

2 Method

Online survey method is utilized to capture the pattern of consumer behavior in using cellular phones. The consumer population in this research is residents in 12 most populous cities in Indonesia and with the addition of one megacity area, which is the Jabodetabek (13 regions in total). There are 1,030 respondents of total samples with 95% Confidence Level and 3.1% margin of error. Non-probability sampling is applied as the sampling method, specifically the purposive sampling.

The data are analyzed with a regression method using Common Effect Model (CAM) approach or commonly known as Pooled Least Square (PLS). The data assembled from the survey are a panel data with unbalanced panel data type—with 3,509 observations for Regression Model 1 and 2 and 1,802 observations for Regression Model 3 (952 respondents in total after data validation). The data are unbalanced for the existence of many varieties of phones owned by each respondent—where in this research accounted as time series.

There are three model specifications that are used, as written below:

Model 1:

$$y_{it} = \beta_0 + \beta_1 X_{1it} + \beta_2 X_{2it} + \beta_3 X_{2it} + \beta_4 X_{4it} + \beta_5 X_{5it} + \beta_6 X_{6it} + \beta_7 X_{7it} + \varepsilon_{it} \quad (1)$$

Model 2:

$$y_{it} = \beta_0 + \beta_1 X_{1it} + \beta_2 X_{2it} + \beta_3 X_{2it} + \beta_4 X_{4it} + \beta_5 X_{5it} + \beta_6 X_{6it} + \beta_7 X_{7it} + \beta_8 X_{8it} + \beta_9 X_{9it} + \beta_{10} X_{10it} + \varepsilon_{it} \quad (2)$$

Model 3:

$$y_{it} = \beta_0 + \beta_1 X_{1it} + \beta_2 X_{2it} + \beta_3 X_{3it} + \beta_4 X_{4it} + \beta_5 X_{5it} + \beta_6 X_{6it} + \beta_7 X_{7it} + \beta_8 X_{8it} + \beta_9 X_{9it} + \beta_{10} X_{10it} + \beta_{11} X_{11it} + \varepsilon_{it} \tag{3}$$

Description:

y_{it} = cellular phone’s lifespan

β_0 = intercept

X_{1it} = cellular phone ownership order

X_{2it} = cellular phone ownership order squared

X_{3it} = year of cellular phone ownership

X_{4it} = age

X_{5it} = sex

X_{6it} = economic status

X_{7it} = environmental awareness index

X_{8it} = material obsolescence

X_{9it} = functional obsolescence

X_{10it} = psychological obsolescence

X_{11it} = cellular phone price

ε_{it} = error

i = i -th individual (1, 2, ..., n)

t = t -th cellular phone ownership order (1st phone, 2nd phone, ..., t -th phone)

3 Results

Below are the results of regression estimation using Pooled Least Square (PLS) to capture consumer’s behavior on the use of cellular phone.

Table 1. The Regression Model Estimation Results with Pooled Least Square (PLS)

Variable	Model 1	Model 2	Model 3
Cellular Phone Ownership Order	0.210**	0.219**	1.132***
Cellular Phone Ownership Order ²	-0.032**	-0.032**	-0.197***
Year of Cellular Phone Ownership	-0.134***	-0.137***	-0.107***
Age	0.013***	0.014***	0.010**
Sex	0.052	0.092*	0.081
Social Economic Status	-0.085*	-0.086*	-0.074
Environmental Awareness Index	0.242	0.295	0.473*
Material Obsolescence		0.001	0.012
Functional Obsolescence		-0.062	-0.088
Psychological Obsolescence		-0.197***	-0.203**
Cellular Phone Price			0.061**
Constant	3.779***	3.836***	2.567***

Description:

1. ***, **, * refer to 1%, 5%, and 10% significant level respectively.
2. R² for Model 1 is 12.3%, Model 2 is 11.9%, and Model 3 is 9.9%
3. Global test for goodness of fit (Wald Test) is significant in 1% level for all three models.
4. Breusch-Pagan Test and White Test for heteroscedasticity shows p-value < 0.05 for all three models (the existence of heteroscedasticity problem).

5. All models use Robust Standard Error for eliminating heteroscedasticity.

As the estimations are revealed, here are some remarkable findings:

- Cellular phone's lifespan has declined with increasing years, where cellular phones are currently used shorter than the previous one.
- Based on the cellular phone ownership order, cellular phone's lifespan in Indonesia follows a quadratic pattern (inverted U curve), where the first cellular phone will have a shorter lifespan than the next cellular phone. The lifespan of the following ones remains increasing until at a certain point of cellular phone ownership order, the lifespan declines.
- Psychological obsolescence negatively affects the cellular phone's lifespan. This finding implies that the decisions of consumers to purchase and use cellular phones are largely influenced by subjectivity factors.
- There is no association between individual's environmental awareness level with cellular phone's lifespan.
- The price level is positively associated with cellular phone's lifespan. Phones with higher price tend to be used longer by consumers.

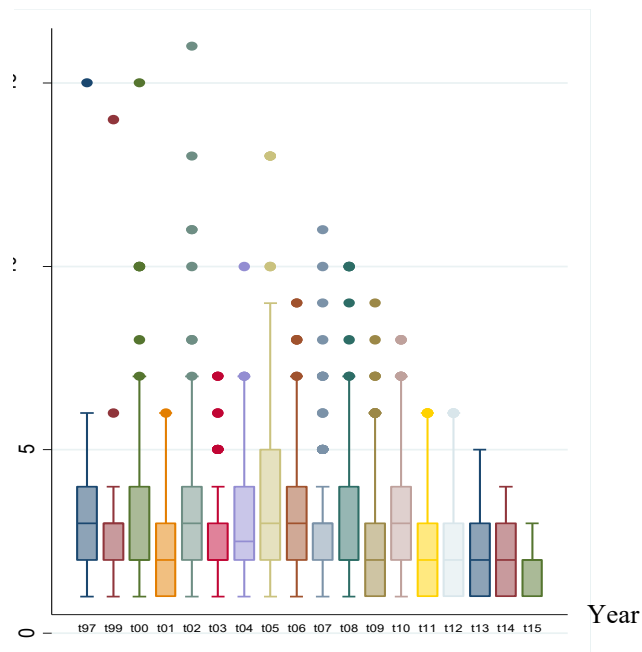


Figure 1. Cellular Phone's Lifespan, 1997-2015

Boxplot in Figure 1. shows that cellular phone's lifespan is continuously decreasing from 1997 to 2015. Maximum lifespan is conspicuously waning each year, alongside with the decline in cell phone's lifespan average and median.

4 Conclusion

Empirically, it is proven that cellular phone's lifespan in Indonesia is facing a decline over the years. This fact indicates the increase in cellular phones consumption because of high product turnover. Consumers are encouraged by various motivations to frequently change

their cellular phones, where individual subjective assessment on a product becomes a crucial point in consumption related decision-making process. Product turnover that occurs rapidly will lead to the rise of uncontrollable e-waste volume. If the waste produced exceeds the environmental carrying capacity, this condition certainly reveals a potential adverse effect environmentally. Thus, a policy and action should be taken to overcome this issue. A sustainable consumption and production system should be proposed to enable a better resource and waste management.

References

1. R. Shah, *Waste statistic* (United Nations Environment Programme, Addis Ababa, 2007)
2. S. Honda, D. S. Khetriwal, R. Kuehr, *Regional e-waste monitor: east and southeast asia* (United Nations University ViE - Sustainable Cycles, Bonn, 2016)
3. G. Bodenstern, H. Leuer, *J. Cons. Pol.* **5**, 29-50 (1981)
4. C. P. Bakker, F. Wang, R. Kuehr, J. Huisman, *J. Clean Prod.* **69**, 10-16 (2014)
5. L. Hennies, R. Stamminger, *Resrc. Conserv. and Recyc.* **112**, 78-82 (2016)
6. T. Cooper, *J. Cons. Pol.* **27**, 421-449 (2004)
7. K. Pope, *Understanding planned obsolescence: unsustainability through production, consumption and waste generation* (Kogan Page Publisher, London, 2017)
8. B. Granberg, *The quality re-evaluation process: product obsolescence in a consumer-producer interaction framework* (Department of Economic History University of Stockholm, Stockholm, 1997)
9. F. Wang, J. Huisman, A. Stevels, C. P. Balde, *Waste Man.* **33**, 2397-2407 (2013)
10. B. Li, J. Yang, B. Lu, X. Song, *Waste Man.* **35**, 247-254 (2015)