

Post-Occupancy Evaluation of Indoor Environmental Quality in a nZEB sport hall in a Mediterranean climate.

Joana Ortiz¹, Maria L. Gonzalez Matterson¹, Paolo Taddeo¹ and Jaume Salom^{1*}

¹Catalonia Institute for Energy Research - IREC, Energy Efficiency in Systems, Buildings and Communities – ECOS group, Jardins de les Dones de Negre 1, 2^a, 08930 Sant Adrià de Besòs, Barcelona, Spain

Abstract. The aim of the present work is to evaluate the environmental comfort of the users of a new nZEB sport hall located in Tarragona, Spain, through a Post Occupancy Evaluation. The study is composed by two phases of measurements where the visual comfort, the thermal comfort and the air quality are evaluated. The first monitoring campaign is focused on a detailed visual comfort evaluation under daylight conditions, done on July 28th, 2017. The second monitoring campaign is focused on the thermal comfort and the air quality and was performed during the Mediterranean Olympic Games from June 19th to July 1st of 2018. Moreover, around 140 of surveys are done to the audience to compare the calculated comfort parameters with the perception of the users. The results of the Post Occupancy Evaluation are satisfactory, obtaining good comfort indexes and demonstrating a good perception by the users.

1 Introduction

At the end of 2018, all public buildings should be nearly Zero Energy Buildings (nZEB) according to the Energy Performance of Buildings Directive [1]. An important task is to perform monitoring campaigns to ensure their initial design assumptions and also to guarantee comfortable conditions for the users. To this aim, the Post Occupancy Evaluation (POE) has the purpose of evaluating the current behaviour of the building and identifying possible measures to improve its operation. This paper summarizes the POE of a new nZEB sport hall located in Tarragona, Spain.

2 Case study

The case study is the Catalunya Sports Hall – Palau d'Esports de Catalunya (Fig. 1), which was built to host the handball competitions during the XVIII Mediterranean Games in 2018. The building was designed by Barceló Balanzó arquitectes + AIA Salazar Navarro, and promoted to be a nZEB sports facility by the Consell Català de l'Esport, Secretaria General de l'Esport, Generalitat of Catalunya [2].

2.1 Building characteristics

The Catalunya Sports Hall is located in the Mediterranean Ring in Campclar, Tarragona. The oval floor plan is longitudinally oriented North-South and the total gross area is 10,822 m² with a maximum height of 15m. The central playing area with 1,920m² is in the underground level (-4.00m), and allows the layout of up to 3 a-side football pitches. Around the court, the 3

levels of the building are organized (-4.00; +0.00 and +3.35) with a seating capacity of 5,000 spectators.

The structure combines reinforced concrete for pillars and slabs, and steel roof trusses. The metallic roof is slightly curved with a central skylight of 12m width and 48m length, symmetrically placed in the centre of the playing area. The roof and the façade are covered with a ceramic system. The façade is organized in 3 levels. The fenestration varies its glazing material and the brise-soleil (shading devices), modifying their spacing and orientation to improve the sun protection.



Fig. 1. Images of the premises (top) and the inside (bottom) of the Catalunya Sports Palace.

* Corresponding author: jsalom@irec.cat

The main HVAC system is composed by a condensing boiler to cover the heating needs, and two air-to-water heat pumps to provide the cooling demand. The heating and cooling production is used by four air handler units to regulate the air according to the court and the grandstand needs, and provide fresh air to the sport hall, using a CO₂ sensor for regulation. The operation conditions during the 2nd monitoring campaign are configured with a setpoint of 22-23°C of air return temperature.

2.1.1 Skylight optimization

During the design project, the skylight of 576m² was optimized with the aim to provide natural light to the playing area and the visual comfort conditions for the building's users by dynamic daylight simulations [2]. As a result, the skylight features are the following (Fig. 2):

- the glazing is a translucent polypropylene surface with a 0.20 coefficient for visible light transmission;
- the continuous micro-perforated white fabric that covers all the ceiling, creating a sloped shape between the translucent (skylight) and opaque horizontal surfaces (structure);
- the vertical baffles, coated with the same material of ceiling (micro-perforated white fabric), are placed to increase daylight diffusion and for keeping out of sight the skylight openings for users.

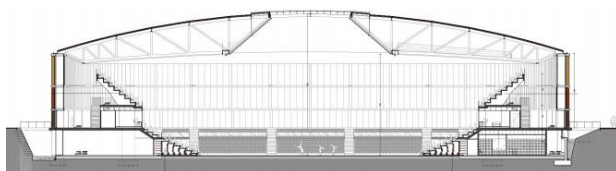


Fig. 2. Cross section (towards the South) of the Catalunya Sports Palace.

3 Methodology

The study is composed by two phases of measurements: the 1st monitoring campaign is focused on the visual comfort assessment, and the 2nd campaign is for the thermal comfort, the air quality and audience environmental comfort survey evaluation.

3.1 Monitoring visual comfort: 1st campaign

The first monitoring campaign, done on July 28th, 2017, is focused on a detailed visual comfort assessment under daylight conditions [3], performing lighting quantity and quality evaluation [4]. These measurements were carried out in the last phase of the construction works of the sport hall and before the realisation of the Games.

In order to assess the visual comfort of users [5], horizontal illuminance (E_h) measures and High Dynamic Range Images (HDRIs) are obtained under daylighting. The measurements conditions are shown in Table 1

3.1.1 Horizontal illuminance levels

For the E_h at +1.10m level, an orthogonal grid is used (see Fig. 3) covering the total playing area with 117 spots measurements with rows (1 to 9: 4m spacing) and columns (A to M: 5m spacing). As a reference value, the outdoor E_h is registered at the same time with a lux-meter located on the roof and without obstructions (from 91,100lx at 11:25h to 99,800lx at 12:05h).

Table 1. Measurement conditions during the visual comfort measurements and surveys.

Data obtained	Date	Time	Sky	Lights
E _h	28/07/2017	Start 11:25 End: 12:05	Clear	off
HDRIL	28/07/2017	Start: 13:00 End: 15:05	Clear	off

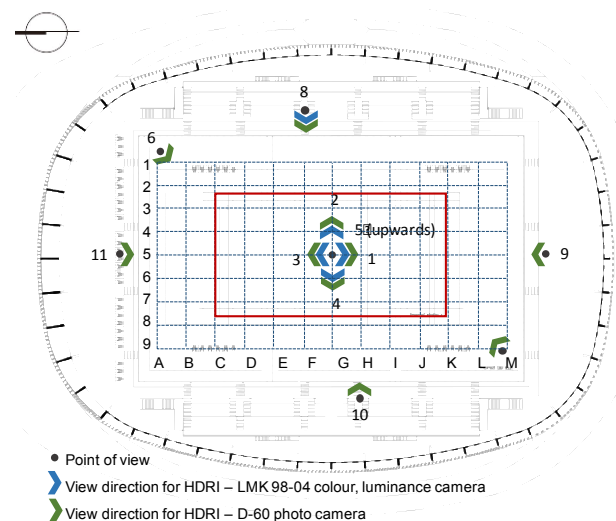


Fig. 3. Drawing of the Catalunya Sports Hall (+3.35) with sensor positions for illuminance (lux-meter), viewpoints and directions for HDRI.

3.1.2 HDRI and Luminance survey

The HDR images are taken with a luminance camera (Charged Couple Device-CCD). The sensors and software used for the visual comfort assessment are described in Table 2. Different shots at +1.55 level are taken in order to cover the visual field of players and audience (shown in Fig. 3). For the players, the points of view are set on the centre of the court, towards the main 5 directions of view: both sides, back, front and upwards (ceiling). For the audience, these are placed in the seating area towards the court. The images resulting of 640x480 pixels with luminance (L) values (scale: 0 - 85,000cd/m²), that will be displayed in false colour. For the HDRI luminances and glare assessments [5], three 3 regions of interest are established in the Visual Field of View (FOV) [1, 2]:

- Region 1: focus (2°),
- Region 2: immediate surrounding (30°), and

- Region 3: far surrounding and background (60°-90°), including the total field of view.

For the visual task performance, the most relevant regions are the focus and the immediate surrounding: regions 1 and 2, respectively. With the LMK LabSoft software [6], the average luminance values of each region are calculated. Moreover, using luminance thresholds in relation to the visual task [7, 8], glare sources are identified for each image, multiplying the average value of the image by factor 7.

Table 2. Equipment and software for the visual comfort

Sensor	Model and specifications
Lux-meter 1 (indoor)	Digital Illuminance Meter T-10 Konica Minolta + tripod
Lux-meter 2 (outdoor)	Digital Illuminance Meter Iso-Tech 1332A
Luminance camera	Video Photo-meter LMK 98-04 color, TechnoTeam, DXM3466 with Fish eye lens 180°, or53324f8sky + tripod
Digital photo camera	Digital Reflex Camera D-60 Nikon + AF-S Nikkor 18-55mm lens + fish eye adapter – 180°+ tripod.
HDRI	LMK Laboratory Software, TechnoTeam

3.2 Monitoring thermal comfort and air quality: 2nd campaign

The second monitoring campaign is focused on the thermal comfort and the air quality evaluation during the Mediterranean Games, from June 19th to July 1st of 2018. Two different equipment are used to monitor the environmental variables, as Table 3 and Fig. 4 show. The data has been collected every 3-min, in order to have a detailed evolution of the environmental variables. Additionally, outdoor environmental data have been used to characterize the weather conditions during the monitoring campaign, obtained from a nearby weather station (around 3 km far).

Table 3 Equipment for the thermal comfort and air quality

Equip.	Sensor	Nº equip.	Position / Orientation
Sensor (S)	Air temperature	13	Court level, medium and higher grandstand/ All orientations
Tower	Air temperature Relative humidity CO ₂ concentration	2	1,65 m of the court/ West and Est

Using the monitoring data, it is possible to calculate the thermal comfort indexes and the air quality assessment for the audience. The calculated parameters are summarized in Table 4, where the main hypothesis and references are detailed. The operative temperature, the Predicted Mean Vote (PMV), the relative humidity and the Givoni bioclimatic chart are used to characterize the thermal comfort of the audience. Regarding the air quality, the CO₂ concentration has been evaluated.

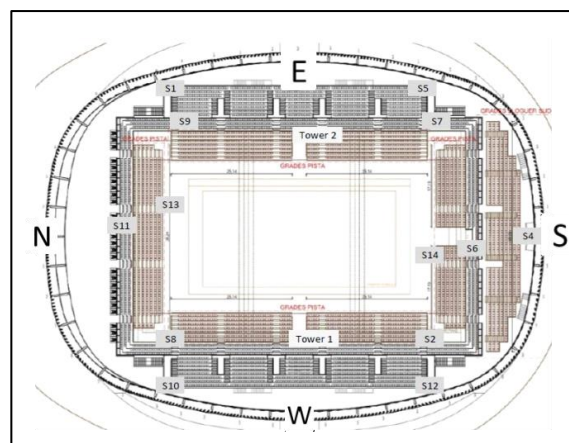


Fig. 4. Drawing of the Catalunya Sports Hall with sensor positions for thermal and air quality measurements.

Table 4. Summary of the calculated comfort indexes

Comfort Index	Hypothesis	Standard
Operative temperature	- Air temperature is equal to mean radiant temperature	Fanger model [9]
Predicted Mean Vote (PMV)	- Air velocity is 0.1 m/s	
	- Air temperature is equal to operative temperature	
	- Metabolic rate of audience is equal to 1.2 met	
	- Clothing of audience is equal to 0.5 clo (surveys)	
	- Only the occupied hours are considered	
Relative Humidity	-	[10]
Givoni bioclimatic chart	-	-
CO ₂ concentration	-	[10]

3.3 Environmental comfort surveys

The 2nd monitoring campaign has been complemented with 140 environmental comfort surveys to the audience, which have been conducted during the last three days of the Games (June 29th - July 1st). The main objective is to compare the measured comfort parameters with the perception of the users. The questions of the survey are detailed in Table 5.

Table 5. Questions of the environmental comfort survey

Comfort	Question
Visual	How do you perceive the illumination level?
Thermal	Which of the following options best indicate your clothing?
	How do you asses your thermal sensation?
	How do you perceive the humidity level?
	How do you perceive the air movement?
Air quality	How do you perceive the air (polluted/fresh)?

The results are evaluated in two groups, in order to identify possible trends: a) all the surveys together; b) periods with higher/lower occupancy levels. Table 6

represents the occupancy level for each handball match, highlighting the matches included in the periods with higher and lower occupancy (red and blue, respectively). Additionally, the matches with highest occupancy (> 500 people) correspond to the semi-finals and finals competitions, which are televised. For this reason, all the artificial lights are turned on, in order to guarantee an appropriate illuminance level. Fig. 5 shows a picture of two different matches with higher and lower occupancy level.

Table 6. Number of people during the handball matches.

Day / Hour	29/06	30/06	01/07
10:00	-	135	950
12:30	-	180	-
13:00	-	-	600
17:30	200	380	-
20:00	200	1150	-



Fig. 5. Handball matches with high and low occupancy levels: 30/06 at 20:00 and 30/06 morning.

4 Discussion of results

4.1 Visual comfort assessment

The in-situ measurements are taken for specific conditions (sky, time, day and month) and due to the variability of natural light during the day and year [4], the values obtained are given as a reference and cannot be extrapolated to the rest of the year and conditions.

4.1.1 Horizontal illuminance levels

The horizontal illuminance level measured on the playing area (Fig. 6), under daylighting conditions, exceeds the minimum for training conditions [11]: 300 lx, as is shown in Table 7. Also, the 99% of the points measured on the court have values are over 1000 lx (from 400 lx and up to 1000 lx are the minimum levels for competitions). The horizontal illuminance uniformity

[11] is 0.56 in the central zone of the playing area (red rectangle of 20.0 x 40.0m) that accomplishes the minimum required (≥ 0.50).

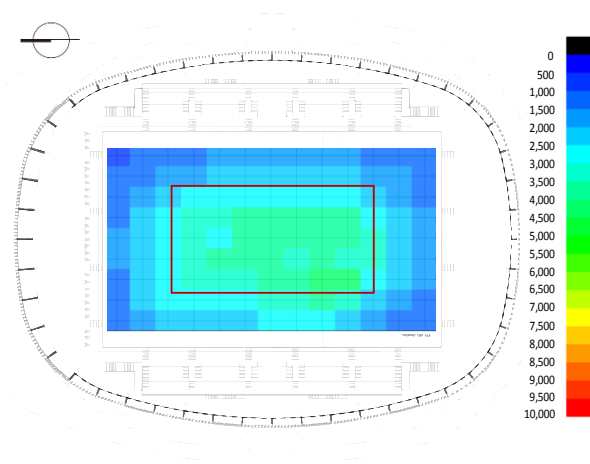


Fig. 6. Drawing of the playing area with the E_h measurements results (scale: 0 to 10,000 lx) of 27th of July 2017, outdoor horizontal illuminance: 91,100lx -11:25h and 99,800lx - 12:05h.

Table 7. Horizontal illuminance values and uniformity on the track.

Horizontal Illuminance	Lux
E_h min	945.00
E_h max	4,188.00
E_h average	2,466.00

4.1.2 HDRI and Luminance survey

The most significant HDR images for the players and the audience are presented below in False colour visualisation. The regions numbered from 4 to 14 have been identified as glare sources (Fig. 7 and Fig. 8). As a summary of the visual comfort assessment for both players and audience, the good distribution of natural light to the playing area has been verified. In this sense, there are no sun patches on the track and glare situations due to the central skylight. Furthermore, the distribution of the luminances on the floor, the ceiling, the side walls and the stands, are generally uniform in the regions 1 and 2 of the FOV. However, some regions have been identified as potential glare sources or that could cause contrast glare (adaptation between 2 surfaces with different luminance values).

- *Player point of view:*
 - the translucent vertical glazing of the North, South-West and South orientation, in particular the lower part of the façade (level +0.00), mainly when the openings are in the central region of FOV of players (Fig. 7a and Fig. 7c).
 - the translucent horizontal glazing of the skylight, but the possibility of glare is less frequent (Fig. 7b and Fig. 7c), due to the peripheral position of the skylight in the payers' FOV while they are performing the visual task.
- *Audience point of view:*

- the translucent vertical glazing of the lower part of the façade with North and South orientation (level +0.00), particularly when the audience is seating in the North and South tribunes, due to the central position of the windows in the audience’s FOV.
- the translucent horizontal glazing of the skylight, specially form West and Est seating area (Fig. 8), due to the near surrounding position of the skylight in the audience’s FOV.

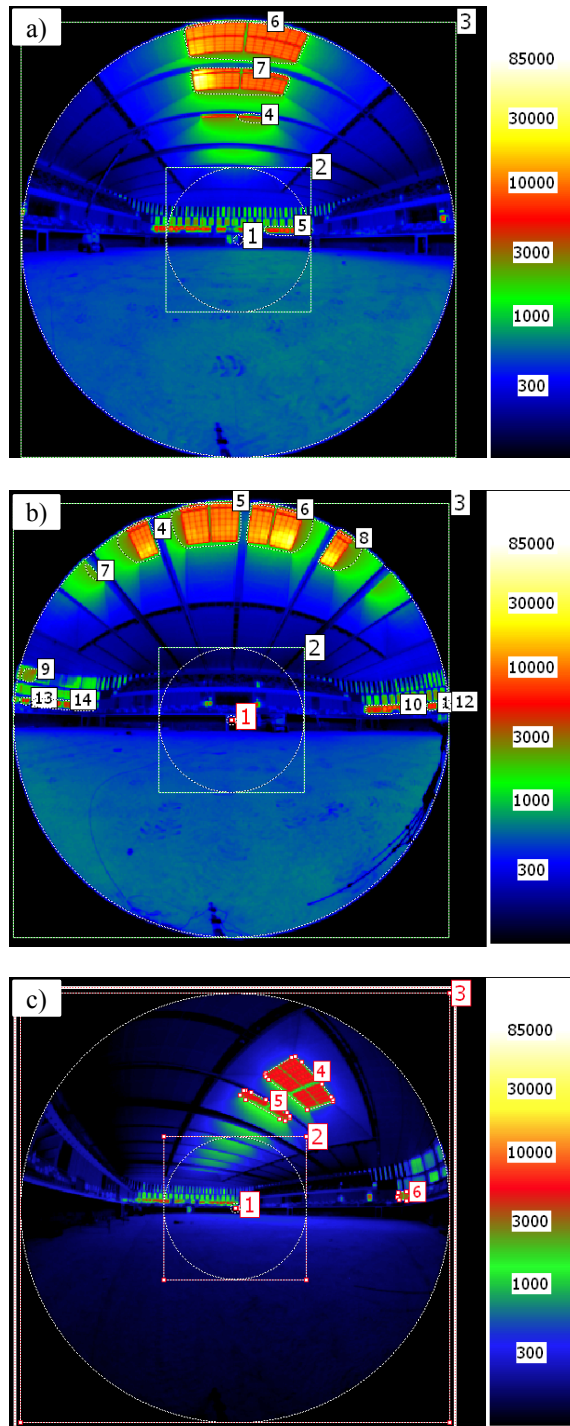


Fig. 7. HDR Image with False colour visualisation from players’ point of view. a) Player view point 1-towards South; b) Player view point 2- towards Est; c) Player view point 6- towards South-West

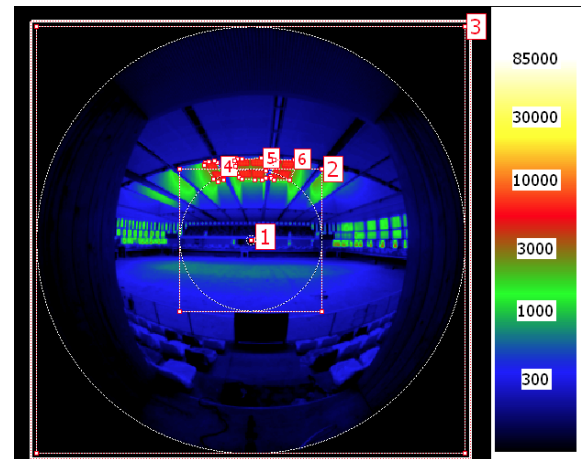


Fig. 8. HDR image from audience view point 8- towards West.

4.1.3 Visual comfort survey

Analysing the results of all the surveys responses suggest that, in general, the visual comfort is achieved for the majority of the audience (Fig. 9), as the overall illumination provided is considered as “Neutral” by the 64%, followed by a 30% that considers the lighting level is “Slightly intense”.

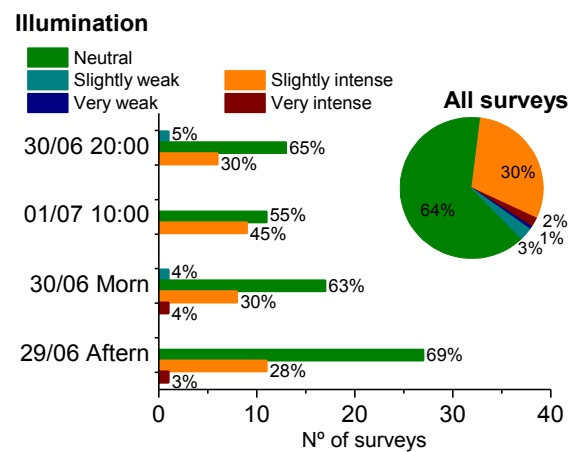


Fig. 9. Results of the visual comfort question for the whole surveys and the matches with higher and lower occupancy levels (Higher: 30/06 at 20:00 and 01/07 at 10:00; Lower: 30/06 Morning and 29/06 Afternoon)

The trend of responses in the different periods of the day (morning, afternoon) is the same, with the exception of the slot on 01/07 at 10:00h, where the “Neutral” perception decreases up to 55% and the “Slightly intense” increases to 45%. The match played on 01/07 at 10:00 was the handball final competition and was televised. All the televised matches have the total of artificial lights turned on, in order to guarantee suitable conditions for TV broadcasting, with maximum lighting levels on the court. That situation could explain the increasing of “Slightly intense” illumination level perception by the audience, due to high levels of both: artificial and natural lighting (10:00 of the morning, with a clear sky).

4.2 Thermal comfort and air quality assessment

The outdoor conditions during the monitoring campaign presented maximum temperatures around 26-28°C and minimum temperatures around 20°C. The relative humidity was higher than 50% during the day, and increased up to 80% during the night. In terms of solar radiation, most of the days were clear sky achieving maximum values around 1000W/m² of total solar radiation. The weather conditions of those days would provide a thermal sensation quite hot.

The analysis is focused on the monitoring data of the Tower equipment, which cover the thermal comfort and the air quality evaluation of the main area where the audience was located (court level and medium grandstand).

4.2.1 Thermal comfort and air quality indexes

Four different parameters are used to evaluate the thermal comfort. Fig. 10 represents the air temperature, which is assumed to be equivalent to the operative temperature, and the relative humidity. In both graphs, the thresholds of each comfort Category are established, being the Category I the more demanding. Following the definition of each Category, the sport hall should operate within the Category II: Minimum comfort category recommended for new or retrofitted buildings.

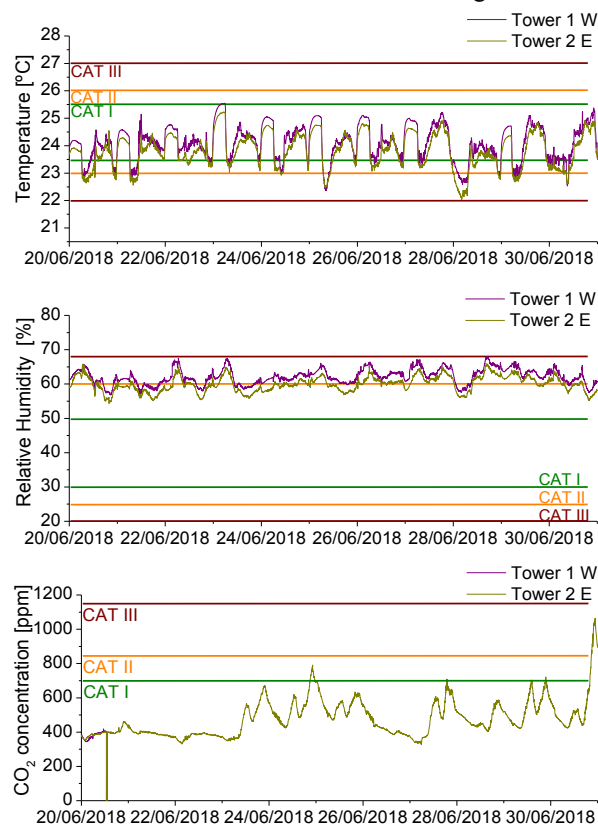


Fig. 10. Thermal comfort and air quality monitored during the Mediterranean Games in relation to their corresponding comfort Categories: Air temperature, Relative humidity and CO₂ concentration

The air temperature is most of the time within the comfort Category II. However, in some few periods, the

temperatures are below the lower threshold of Category II. In all the cases, the colder periods correspond to the time where the HVAC system is switch-on (around 6:30h in the morning), when there is not occupancy in the building. The difference between both towers is lower than 0.5°C and can be due to the location of the sensors. The relative humidity is most of the time between 50-70%, which corresponds to the comfort Category III. In general, the relative humidity increases during the night hours and the HAVC system should dehumidify the air during the day time. This behaviour is typical from coastal areas due to the effect of the sea breeze.

Fig. 11 represents the percentage of time with occupancy where the PMV is in each comfort Category. The three different Categories are represented (I, II and III), together with the sign of the PMV: negative means cool and positive means warm. The results show that for both Towers, most of the time the PMV is in Category I and II. However, some differences can be observed between the towers: Tower 1-W, located in the West grandstand, is in Category I around 85% of the time and around 15% in Category II, being the distribution between PMV>0 and PMV<0 quite similar; the Tower 2-E, located in the Est grandstand, presents a lower fraction of Category I, and consequently a higher fraction of the Category II, being the PMV<0 the more predominant (around 75% of the time the PMV<0). Therefore, in general the PMV is within the comfort Category II, however the Est grandstand presents cooler conditions than the West grandstand.

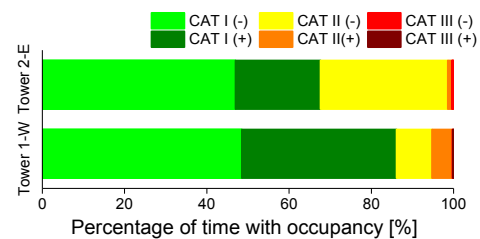


Fig. 11. Percentage of time where the PMV is in each comfort Category. It is differentiated the Category I, II and III; and the sign of the PMV (positive: warm, negative: cool)

Finally, Fig. 12 represents the Givoni bioclimatic chart with the outdoor and the indoor (tower 2-E) temperature and relative humidity plotted. The diagram represents the comfort zone in green, and it is possible to observe that all the indoor values (red) are inside the zone. Most of the outdoor conditions are in the Cooling Dehumidifying Zone and the building design and its HVAC system are able to provide comfortable indoor conditions. The air quality assessment is done evaluating the CO₂ concentration. The last graph of the Fig. 10 represents CO₂ values registered by the towers. During most of the time, the CO₂ concentration is within the Category I, with an exception of the last period of monitoring. At that moment, there was the award ceremony and the CO₂ sensor location was close to the main entrance to the court, where all the people were concentrated. For that reason, the CO₂ increases up to Category III.

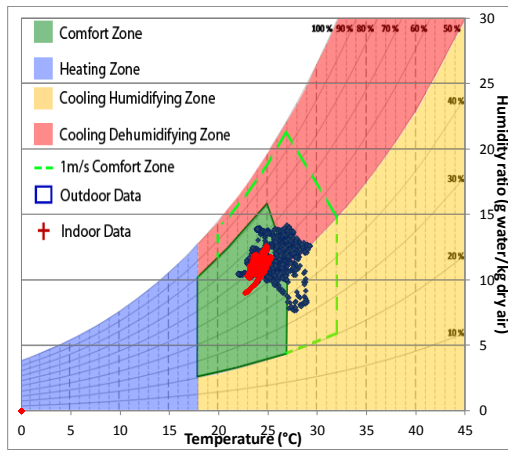


Fig. 12 Givoni bioclimatic chart representing the outdoor conditions (blue) and the indoor conditions of the Tower 2-E (red) during occupied time (10:00h – 22:00h)

4.2.2 Thermal comfort and air quality survey

The thermal comfort and air quality evaluation is complemented with the results of the environmental comfort surveys. Fig. 14 and Fig. 14 represent the main results in terms of thermal comfort and air quality, respectively.

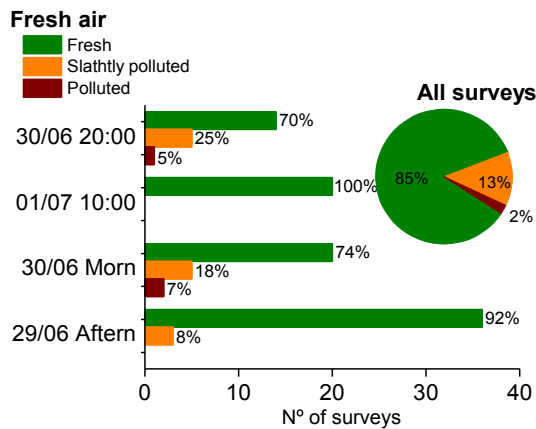


Fig. 13. Results of the air quality question for the whole surveys and the matches with higher and lower occupancy levels (Higher: 30/06 at 20:00 and 01/07 at 10:00; Lower: 30/06 Morning and 29/06 Afternoon)

In general, the answers demonstrate that the audience feel as “neutral” in relation to the thermal sensation, the relative humidity, the air movement and the fresh air, being the most frequent answer (58-85%). In general, the patterns observed analysing all the surveys are the same than by periods, with some particularities:

- The most frequent answer of thermal sensation during the period 30/06 Morning, which correspond to a low occupancy period, is “Slightly cool” with 37%, followed by “Neutral” with 33%. The causes of this slight discomfort could be a combination of effects: the low level of occupancy and the hour of the day, when the lower temperatures were registered.
- The most frequent answer in relation to the relative humidity level is “Neutral”; however, the second answer

varies depending on the hour of the day: the surveys collected during the morning, around 30% of the answers are “slightly wet”, since during the afternoon around 30% are “slightly dry”. This perception could be related to the outdoor condition behaviour (higher relative humidity at night).

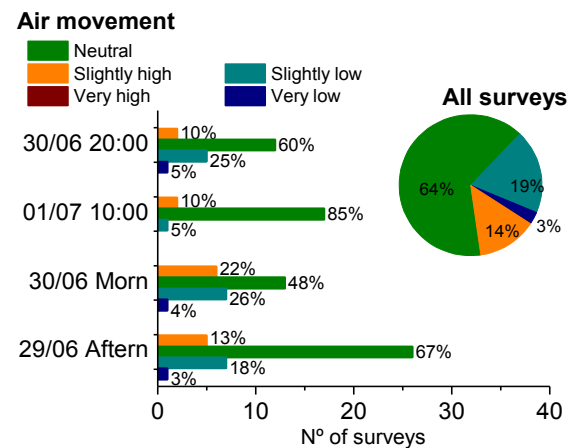
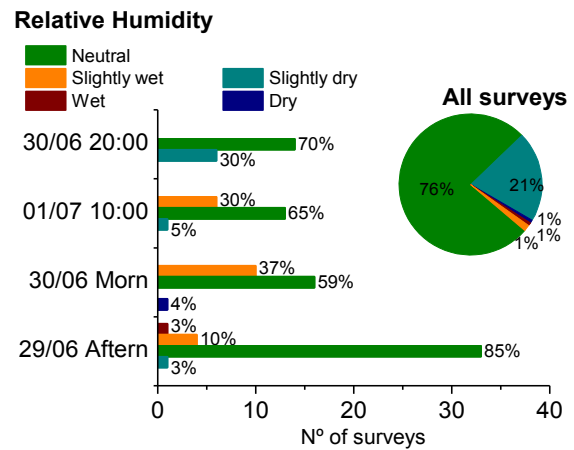
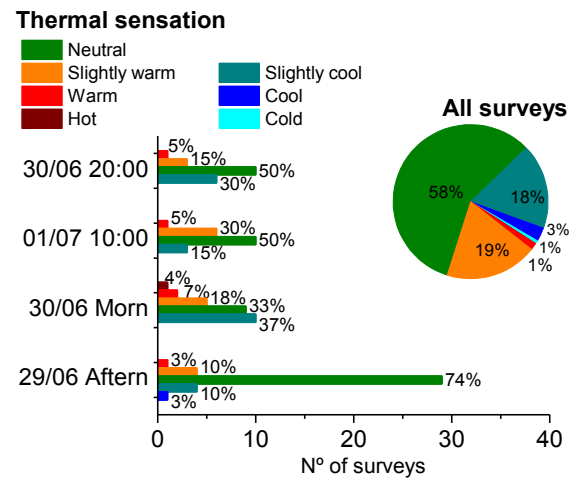


Fig. 14. Results of the thermal comfort questions for the whole surveys and the matches with higher and lower occupancy levels (Higher: 30/06 at 20:00 and 01/07 at 10:00; Lower: 30/06 Morning and 29/06 Afternoon)

5 Conclusions

The work presented in that paper is focused on a Post-Occupancy Evaluation of a nZEB sport Hall, which has been performed based on two monitoring campaigns. The assessment is divided in three main environmental comfort analyses: visual comfort, thermal comfort and air quality. The monitoring campaigns are complemented with an environmental comfort survey to the audience, in order to correlate the monitored data to the user perception.

The results of the detailed visual comfort assessment under daylight conditions show the complexity of the visual environment evaluation in this type of buildings. For that, multi-directional viewpoints and different visual user requirements and user positions onto the space have been considered. Although the measurements and the HDR images are taken under specific conditions (sky, time, day and month); the results validate the integrated measures into the early phases of the design project by the daylight optimization of the central skylight for the visual comfort. Likewise, the good performance of the skylight is demonstrated during a period of maximum values of global solar radiation (summer), avoiding direct light and sun patches on the court. The audience surveys show that the visual comfort is achieved during the international competitions, under both natural and artificial lighting. Importantly, visual comfort conditions are also accomplished during daytime for the specific requirements of TV transmission of the Mediterranean Games, with a high contribution of the natural light.

In relation to the thermal comfort results, the evaluated indexes demonstrate that the building and its HVAC system are able to provide high levels of thermal comfort to the users, being in most of the cases in Category I and Category II of comfort. The only exception is the relative humidity, which is most of the time in Category III. However, analysing the Givoni bioclimatic chart, the relation between the indoor temperature and the relative humidity are inside the thermal comfort zone. Comparing those results with the surveys, the audience feels neutral conditions for thermal sensation, relative humidity and air movement. Therefore, there is coherence between the monitored parameters and the answers of the occupants.

The air quality assessment demonstrate that the CO₂ concentration levels are in Category I for most of the time, fact that is confirmed with the survey's results.

Some trends have been observed (the air temperature is close to the lower comfort threshold during the first hours of the day, the relative humidity is higher in the morning, the Est grandstand are colder than the West grandstand) and need to be followed with especial attention in order to avoid possible discomfort situations in the future. Additionally, further research is needed to complement the study with: the energy evaluation of the building, in order to verify the nZEB energy objectives; the behaviour of the building under different weather conditions (winter) and higher levels of occupancy.

Concluding, the design of the nZEB sport hall achieves the main objectives related to provide comfortable

conditions to the users. Additionally, it is demonstrated the importance to perform specific studies before and after the building construction, in order to evaluate the environmental comfort of the users.

Acknowledgements: This work was supported by the Consell Català de l'Esport, Generalitat de Catalunya.

References

1. European Commission, *Energy Performance of Building Directive (EPBD)*. 2010/31/EU (2010)
2. M.L. González Matterson, J. Salom. *Simulacions dinàmiques de llum natural i anàlisi dels tancaments pel projecte: Nova construcció del Palau d'Esports a la zona esportiva del Camp Clar de Tarragona*, (Institut de Recerca en Energia de Catalunya - IREC, 2015)
3. M.L. González Matterson, J. Ortiz, J. Salom. *Mesures d' il·luminància horitzontal i aixecament HDRI al Nou Palau d'Esports a la zona esportiva del Camp Clar de Tarragona*. (Institut de Recerca en Energia de Catalunya - IREC, 2017)
4. M.C. Dubois, N. Gentile, C.N.D. Amorim, D. Geisler-Moroder, R. Jakobiak, B. Matusiak, S. Stoffer, S. *Monitoring Protocol for Lighting and Daylighting Retrofits*. (Technical Report of IEA SHC Task 50: Fraunhofer-Institut für Bauphysik, 2016)
5. M. Inanici, *Lighting Res Technol* **38**, 123-136 (2006)
6. T. Porsch, F. Schmidt, *The 2nd CIE Expert Symposium* (2010)
7. J. Wienold, J. Christoffersen, *Energ Buildings* **38**, 743- 757 (2006)
8. J. Wienold, *Daylight Glare analysis and metrics*, (Radiance Workshop, 2014)
9. UNE-ISO 7730:2006. *Ergonomics of the thermal environment - Analytical determination and interpretation of thermal comfort using calculation of the PMV and PPD indices and local thermal comfort criteria* (2006)
10. UNE-EN 15251:2008. *Parámetros del ambiente interior a considerar para el diseño y evaluación de la eficiencia energética de edificios incluyendo la calidad del aire, condiciones térmicas, iluminación y ruido* (2008)
11. UNE-EN 12193:1999. *Iluminación. Iluminación de instalaciones deportivas* (1999)